



Address: 23 Gil, Herzeliya, Israel. **Eco engineers:** Amiad Lapidot. **Client:** H family. **Completion:** 2011.
Ecological aspects: solar energy; double layered façade thermal buffer; solartube; solar heating; recycled steel and furniture; degree of sealing: 14%.



↑ | South façade
 → | East façade

House H

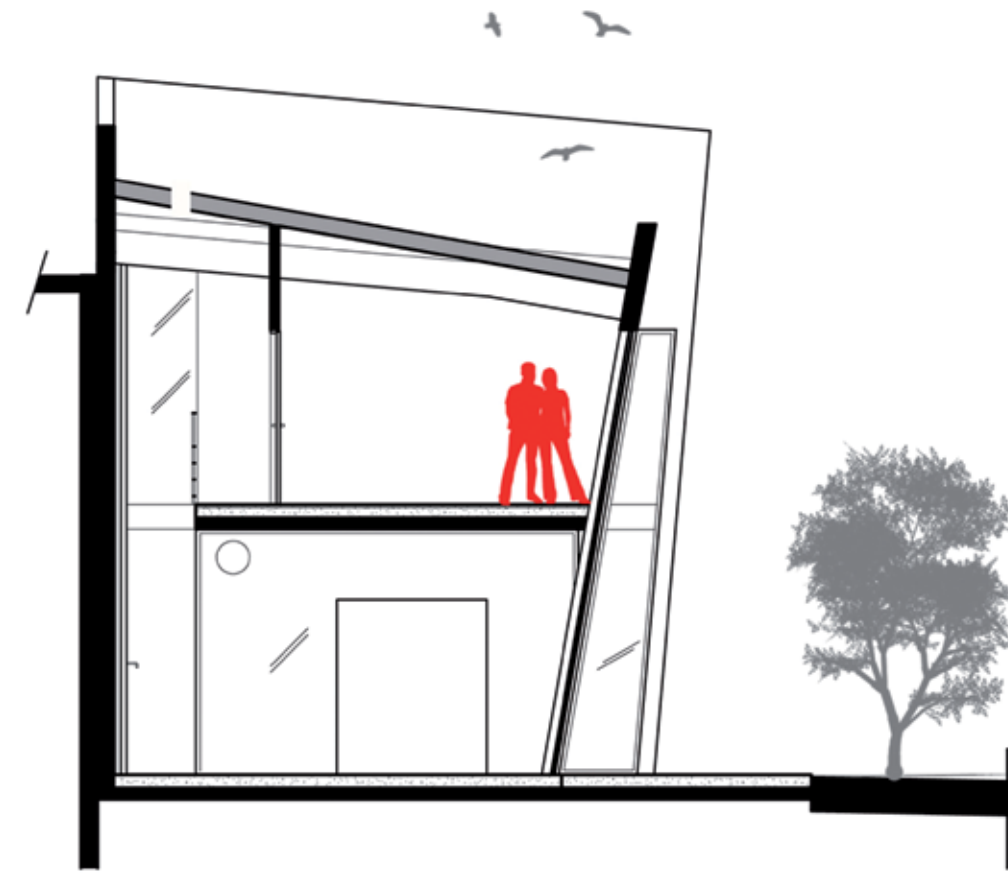
Herzeliya

This house is located on a long narrow site, which made the design process unusually difficult. The problems posed by the location included an adjacent house blocking light to the west. The solution comprises a series of protruding elements that break away from the main volume and project out towards the west, reaching out towards the light. The east wall is relatively closed, with just a few small openings. One of the main design themes is energy efficiency. The design features efficient insulation materials, extra thick walls, high thermal mass and storage containers for rainwater and dew.





↑ | Interior, view towards living room
 ← | North façade



↖ | Section, two levels
 ↓ | Interior, view towards kitchen

